



6a Hanover Street, Herne Bay, Kent, CT6 5RN



One Bedroom first floor flat in a central location. Features gas central heating and double glazing. Ideal for single person only. No garden or parking available. £800 PCM and Deposit £923. A refundable holding deposit of £200 is required.

£800 Per Month



Double glazed front door

Leading to stairs to first floor, Hallway with cupboard housing boiler and plumbed for washing machine,

Reception

12'4" x 16'6" (3.78m x 5.03m)

Power points, Radiator,

Bedroom

16'0" x 6'7" (4.88m x 2.01m)

Radiator, Power points,

On suite shower room

Electric shower in cubicle, Low level WC, Basin,

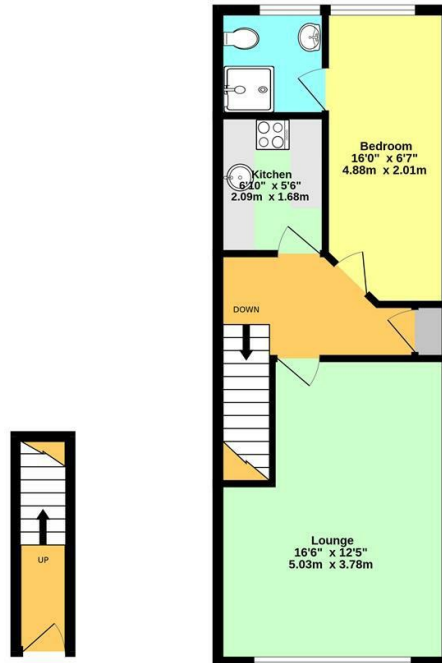
Kitchen

5'6" x 6'10" (1.68m x 2.086m)

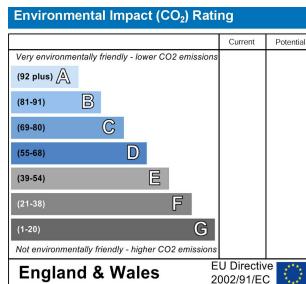
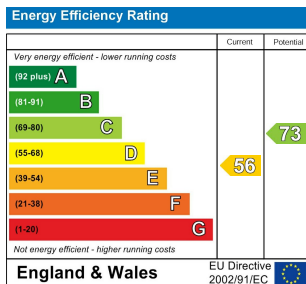
Cupboards and worktop, fridge, Electric oven hob and extractor,

Council Tax

Banding A



While every attempt has been made to ensure the accuracy of the floorplan contained here, measurements of doors, windows, rooms and any other parts are approximate and no responsibility is taken for any error or omission in this statement. This plan is for illustrative purposes only and should be used as such by any prospective purchaser. The services, systems and appliances shown have not been tested and no guarantee as to their operability or efficiency can be given.
Made with Metropix C3025



Note:

We have not tested the heating system, electrical appliances or the electric, gas and plumbing systems.

If travelling any distance to view this property it is advisable to check the availability and viewing times before hand. Wilbee & Son, as agents, cannot be held responsible for lost journey times and / or any expenses incurred.

These particulars are issued on the condition that any negotiations respecting the property are through Wilbee & Son. Every care is taken in giving particulars but should any error inadvertently occur or any property found to be previously withdrawn or disposed of, Wilbee & Son do not hold themselves responsible for any expenses or loss of time incurred. Neither the Vendor, nor the Partners or any employee of Wilbee & Son make or give any representation or warranty in relation to the property.

Oyster Financial Services is an appointed representative of Openwork Limited, which is authorised and regulated by the Financial Services Authority



WILBEE & SON



01227 374010

property@wilbeeandson.co.uk



WILBEE & SON



01227 374010

property@wilbeeandson.co.uk